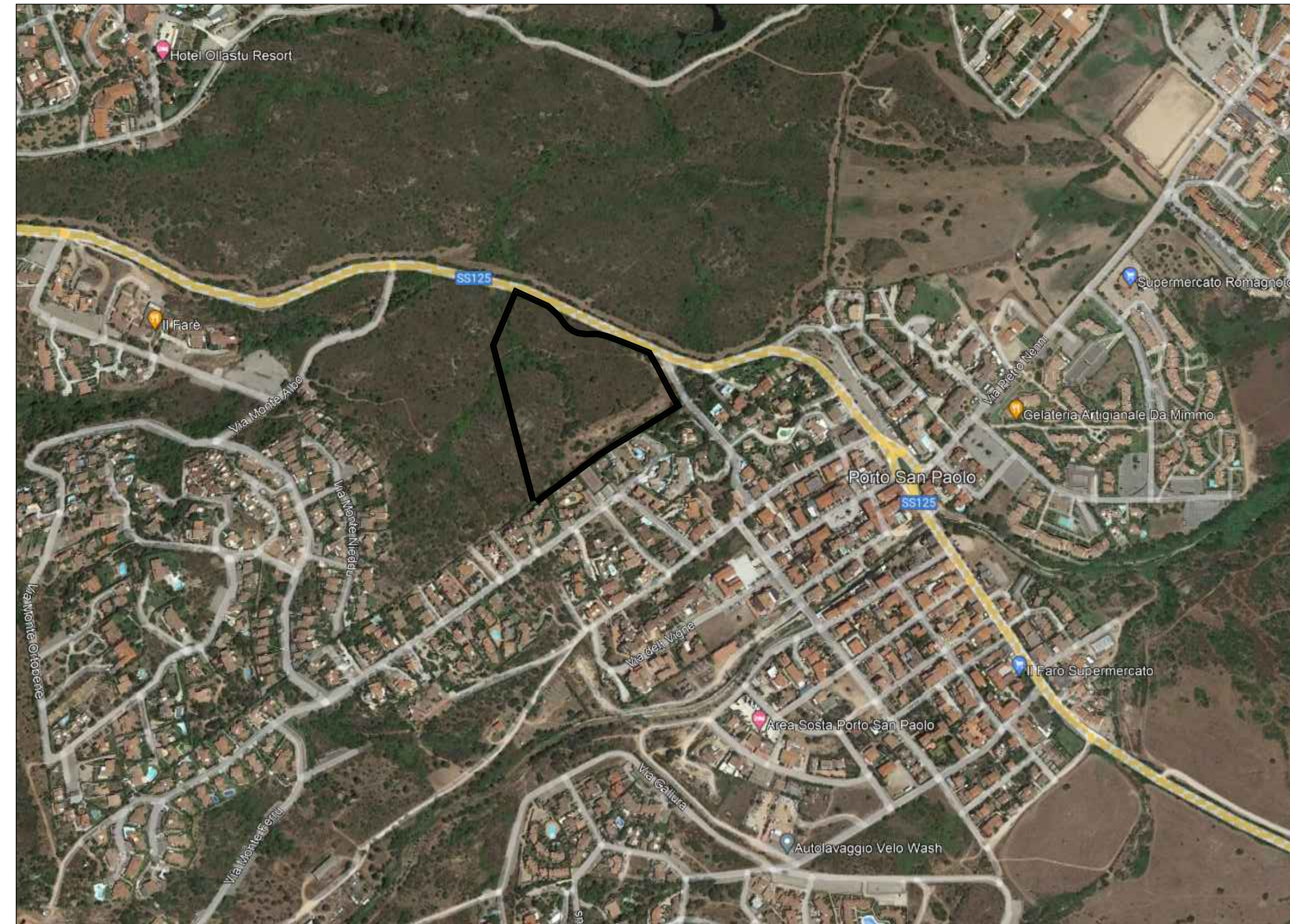
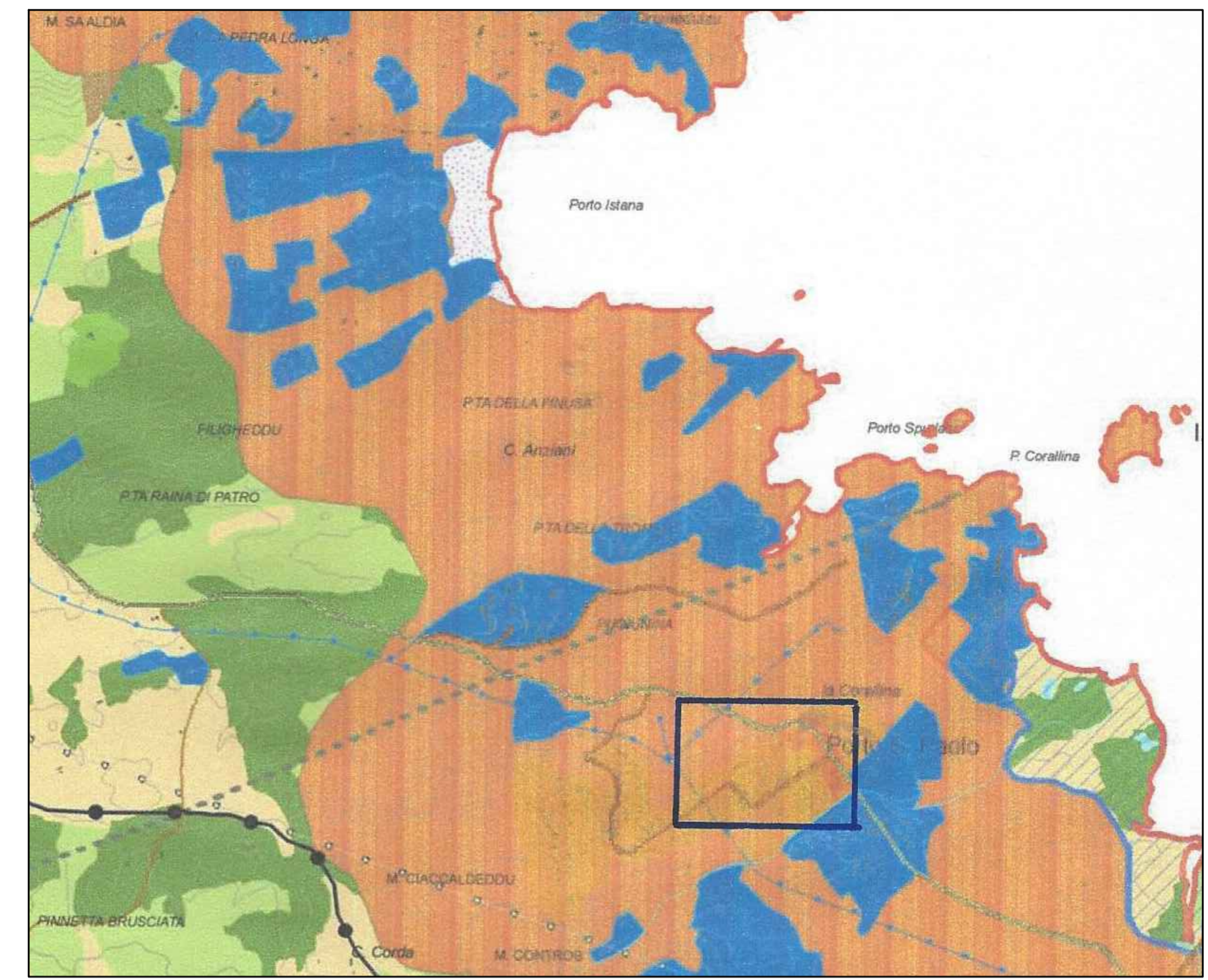




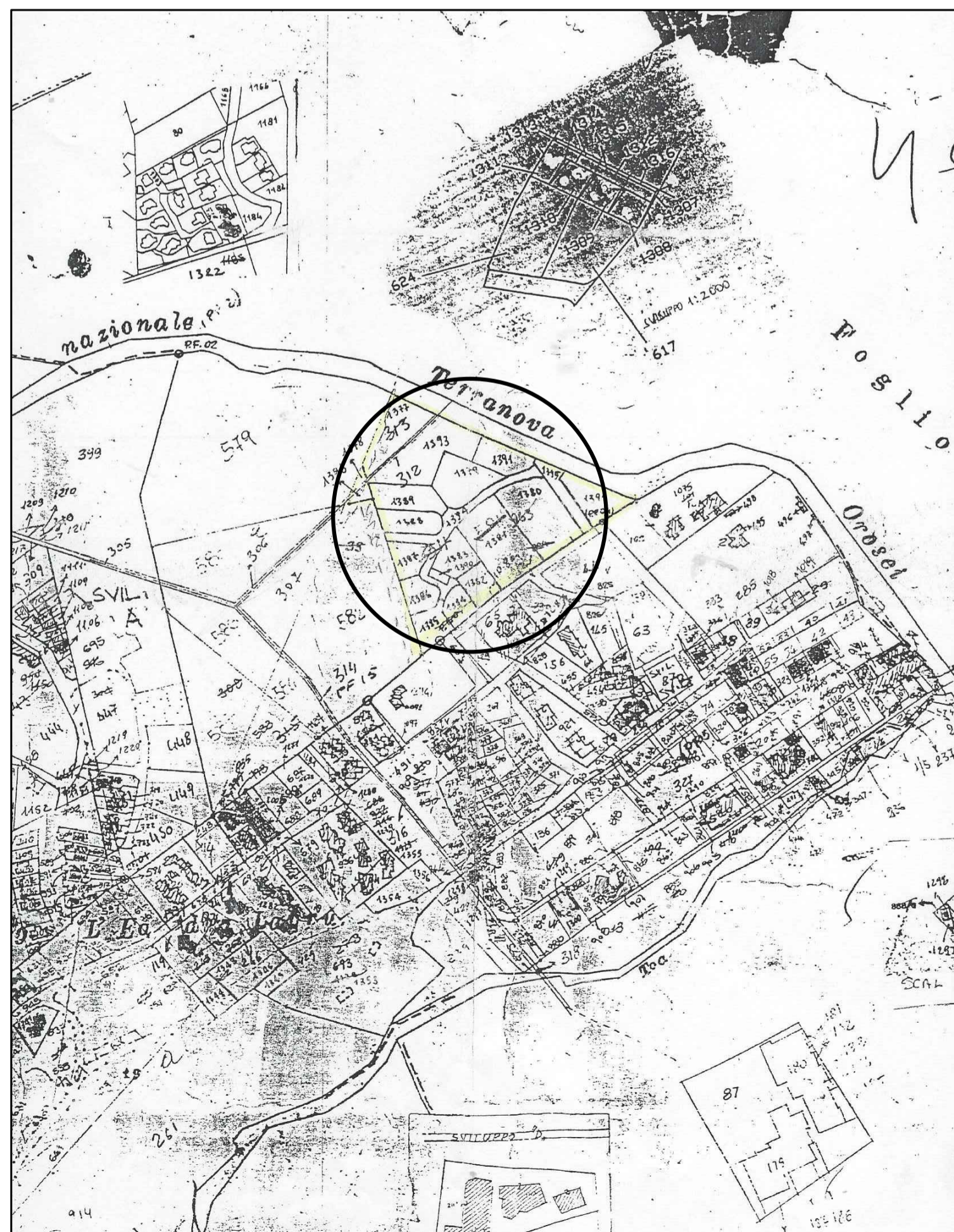
IGM



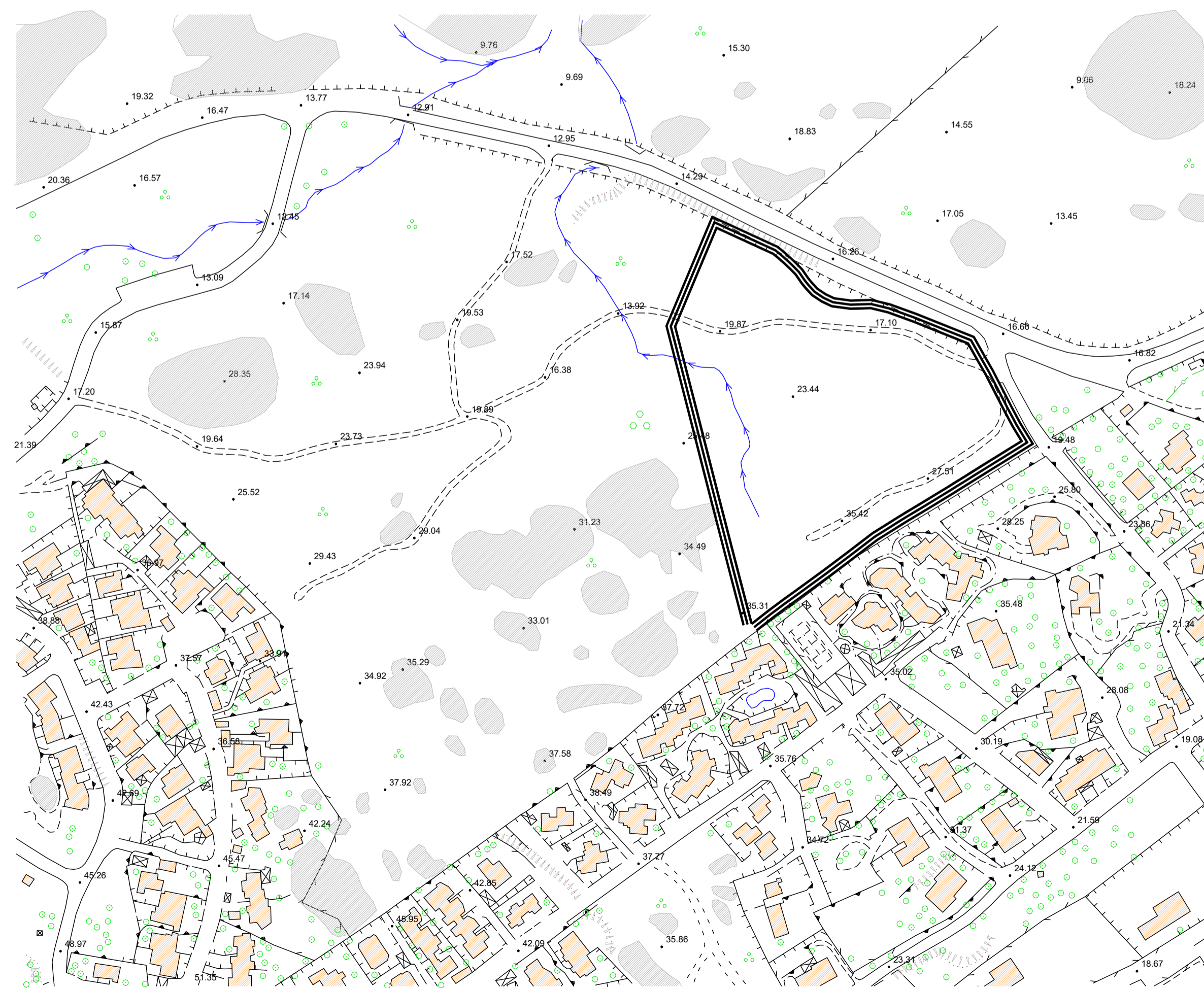
AEROFOTO



PPR



CATASTALE



AEROFOTOGRAMMETRIA

COMUNE DI LOIRI PORTO SAN PAOLO
PROVINCIA DI SASSARI

PIANO DI LOTTIZZAZIONE CONVENZIONATO
"LE VEDUTE DI TAVOLARA"

UBICAZIONE : PORTO SAN PAOLO
COMPARTO C 3.20

DITTA PROP.: LE VEDUTE DI TAVOLARA SRL

TAV. 1 PLANIMETRIE INQUADRAMENTO
SCALA : VARIE

PROGETTISTI: ARCH. ANDREA G. ANTOLINI
ARCH. ANTONIO. ANTOLINI